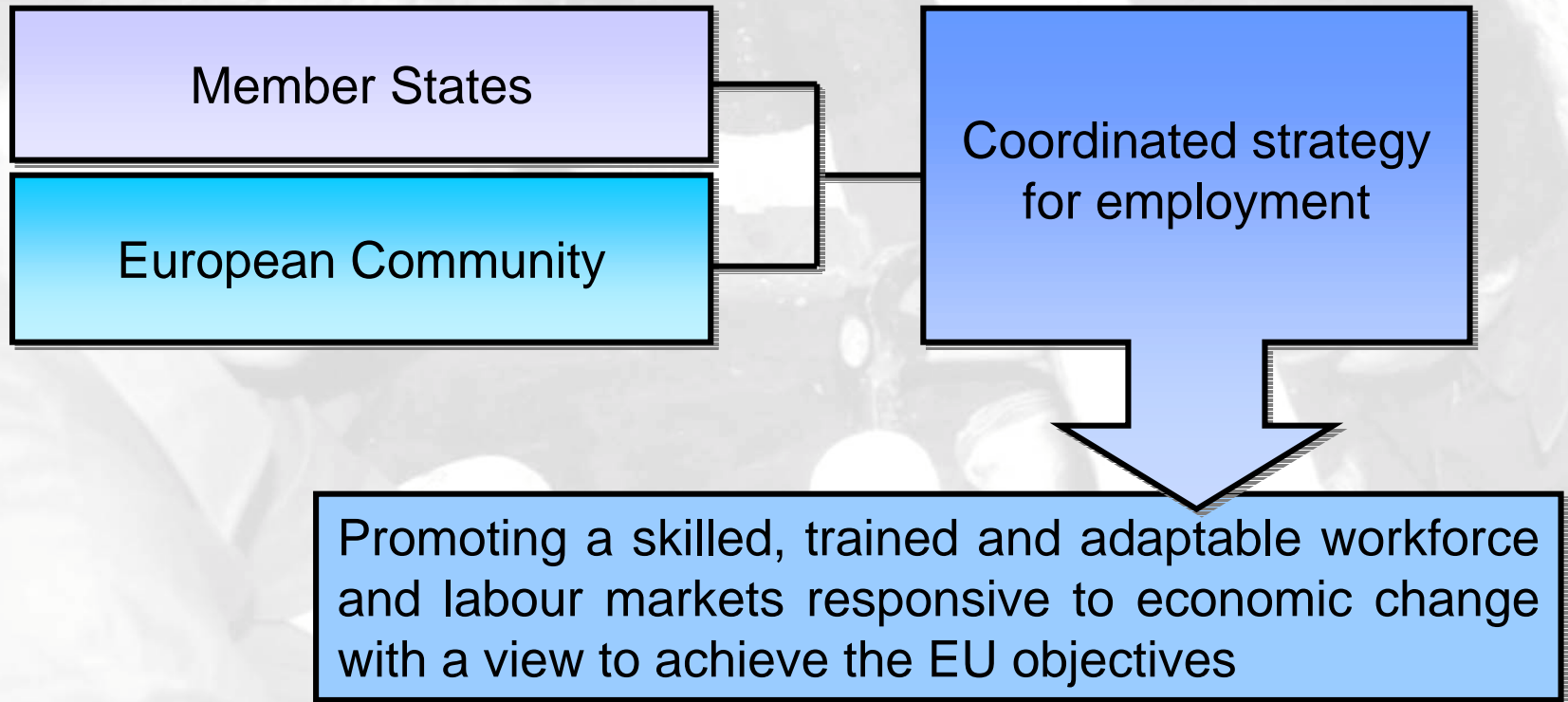




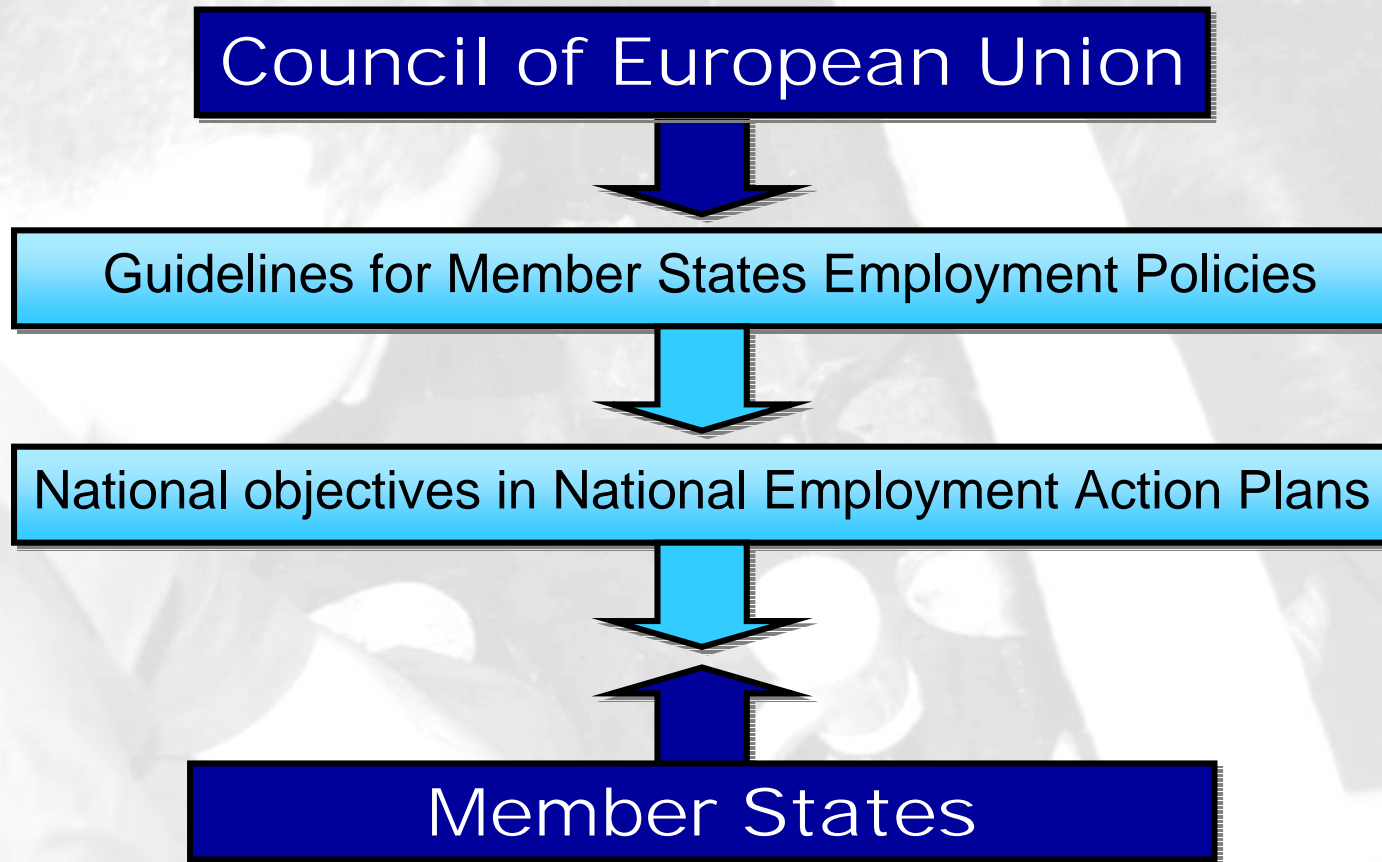
MARESME TERRITORIAL EMPLOYMENT PACT

Debrecen, September 2002

Article 125 EC Treaty



MARESME TERRITORIAL EMPLOYMENT PACT



Action Plans for Employment *Bases: the four pillars*

**Improving
Employability**

**Developing
entrepreneur-
ship**

**Encouraging
adaptability of
businesses and
their employees**

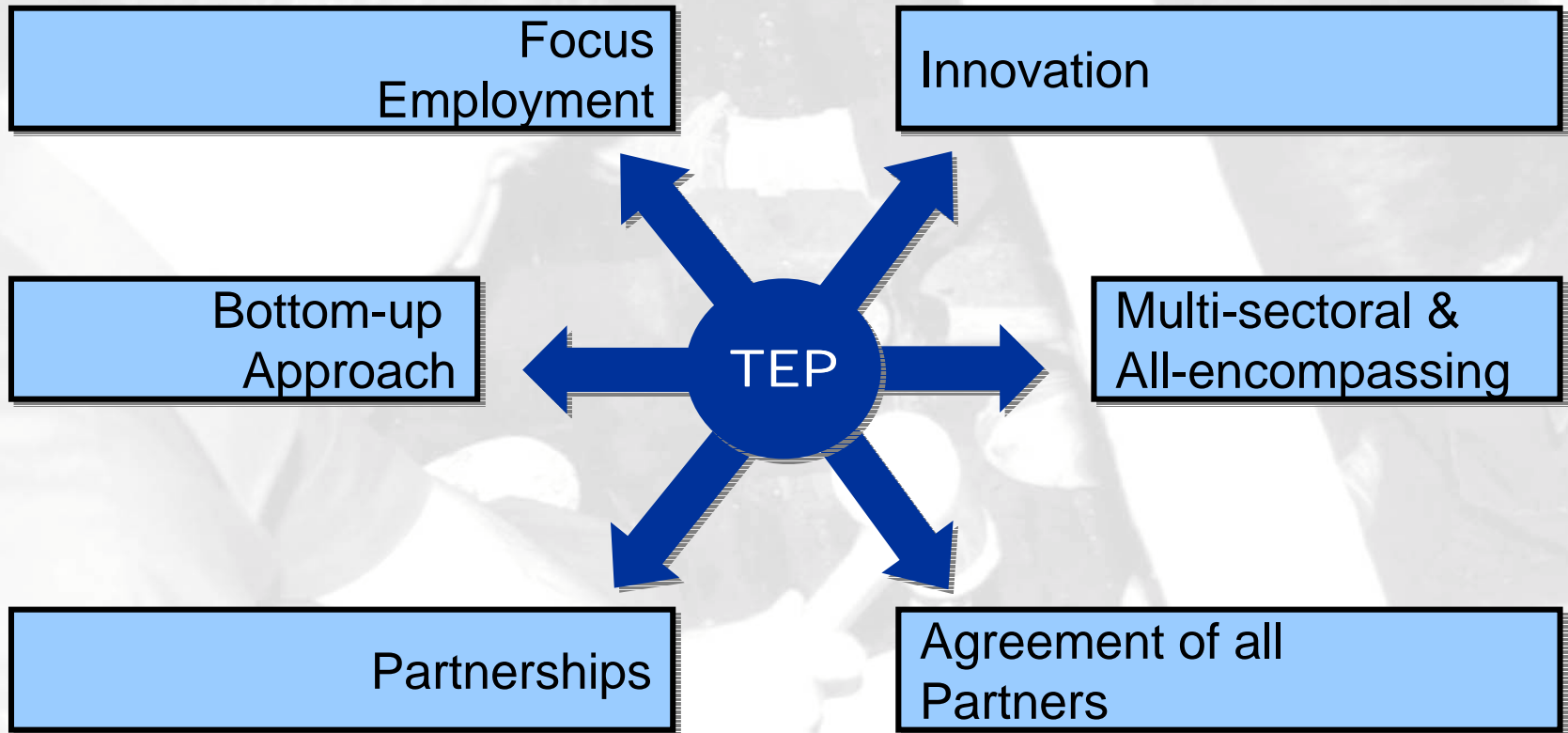
**Strengthening
equal
opportunities
Policies**

MARESME TERRITORIAL EMPLOYMENT PACT

Aims to develop TEPs

- ✓ To highlight the importance of locally based initiatives to combat unemployment.
- ✓ To identify the difficulties of the local and regional players involved and their prospects in the field of employment.
- ✓ To mobilize all available resources in favor of an integrated strategy for the creation of new employment opportunities, as well as to better integrate and coordinate measures for creating and sustaining jobs.

TEPs CHARACTERISTICS



MARSEME TERRITORIAL EMPLOYMENT PACT

1999 Diputació de Barcelona fosters the implementation of TEPs



MARESME TERRITORIAL EMPLOYMENT PACT

Maresme TEP

Agents

Trade Unions Entreprises Local Authorities

Procedure

Deciding jointly on measures and actions to be implemented, assessing them by common benchmarks and planning their future development

Aim

Help, create and maintain jobs at local level

MARESME TERRITORIAL EMPLOYMENT PACT

Maresme TEP

Workgroup
of Local
Experts



- Analyze the social and economic environment
- Analyze the needs as far as employment is concerned
- Set forth measures accordingly

- Relevant indicators, figures and tendencies in the different areas of activity
- Needs for specific groups
- Suggestions for the better functioning of the existing public employment services in the area

*Document
2000-2002*

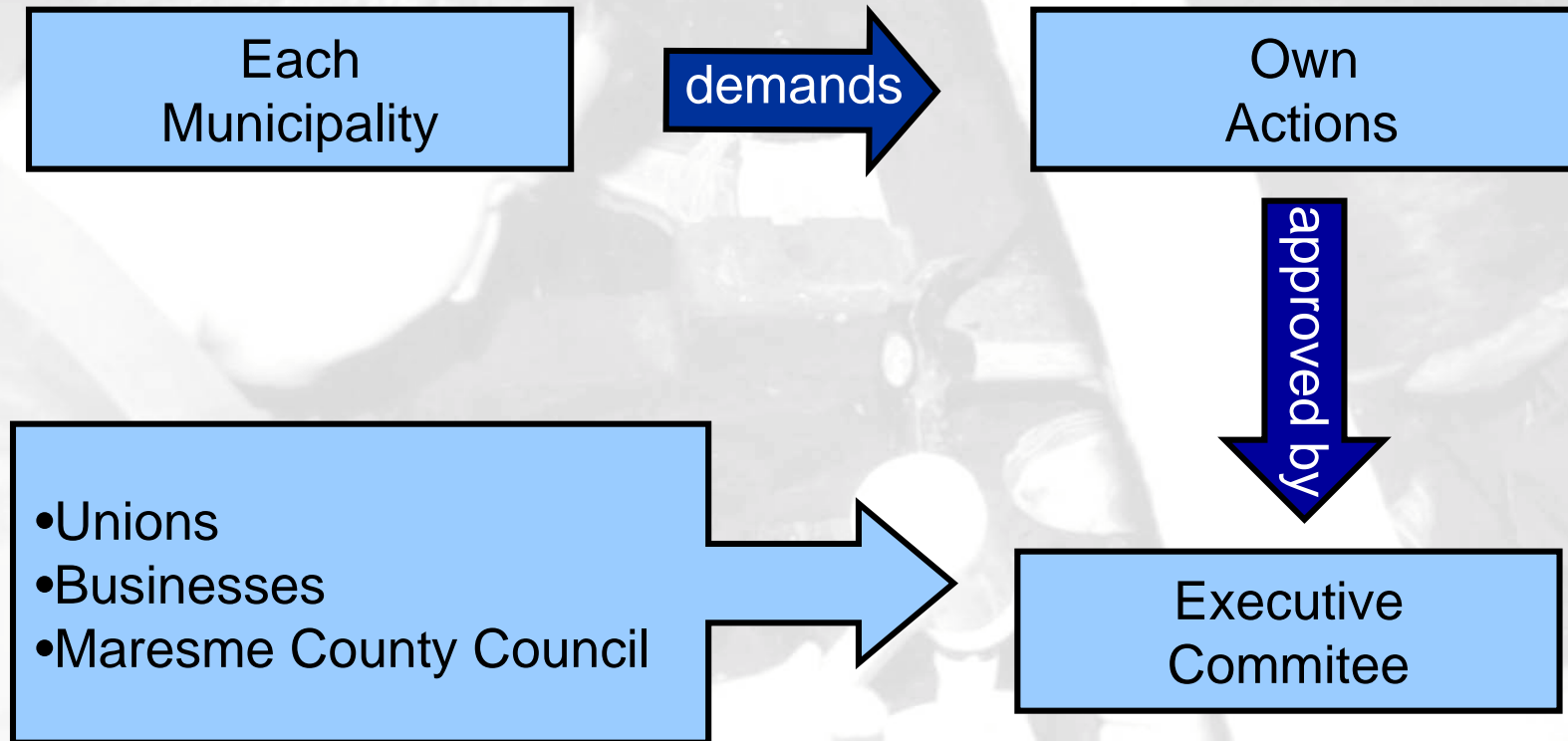
MARESME TERRITORIAL EMPLOYMENT PACT

Joint Action Plan 2002

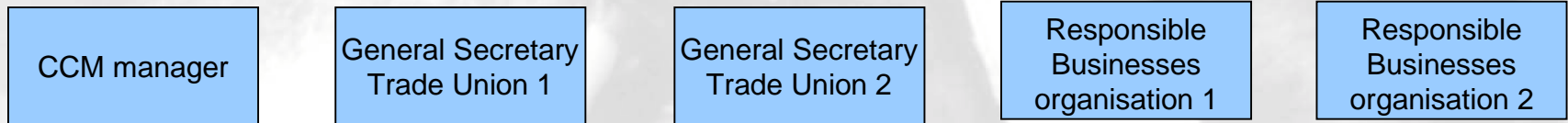
- Web side of the pact
- Economic development plan 2003 - 2004
- Virtual community for municipal managers
- Antennae on Security and labour helth
- Support to the microemployer
- Enforcing competitiveness in the information society
- Implementation of the labour training quality system

MARESME TERRITORIAL EMPLOYMENT PACT

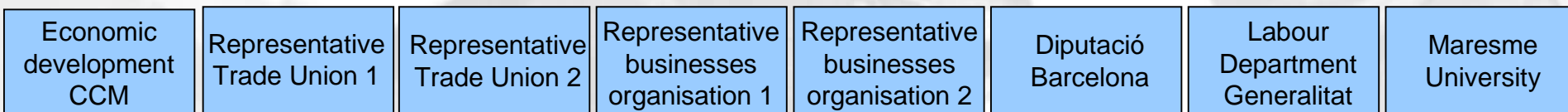
Other Actions



Executive Committee



Technical Commission



Plenary Meeting



Where to find more information?

Employment and Social Affairs DG

http://europa.eu.int/comm/employment_social/esf/en/public/terp/en/toc.htm

European Resources Office. Consell Comarcal del Maresme

sre@ccmaresme.es

Conclusions

- ✓ This strategy is a first step towards a joint planning of employment policies at the local level.
- ✓ Social and economic indicators must be the guiding lights in all the process.
- ✓ A key point is the establishment of a standard procedure to analyze and evaluate all initiatives put into action within the TEP, so as to learn from previous mistakes or successes.