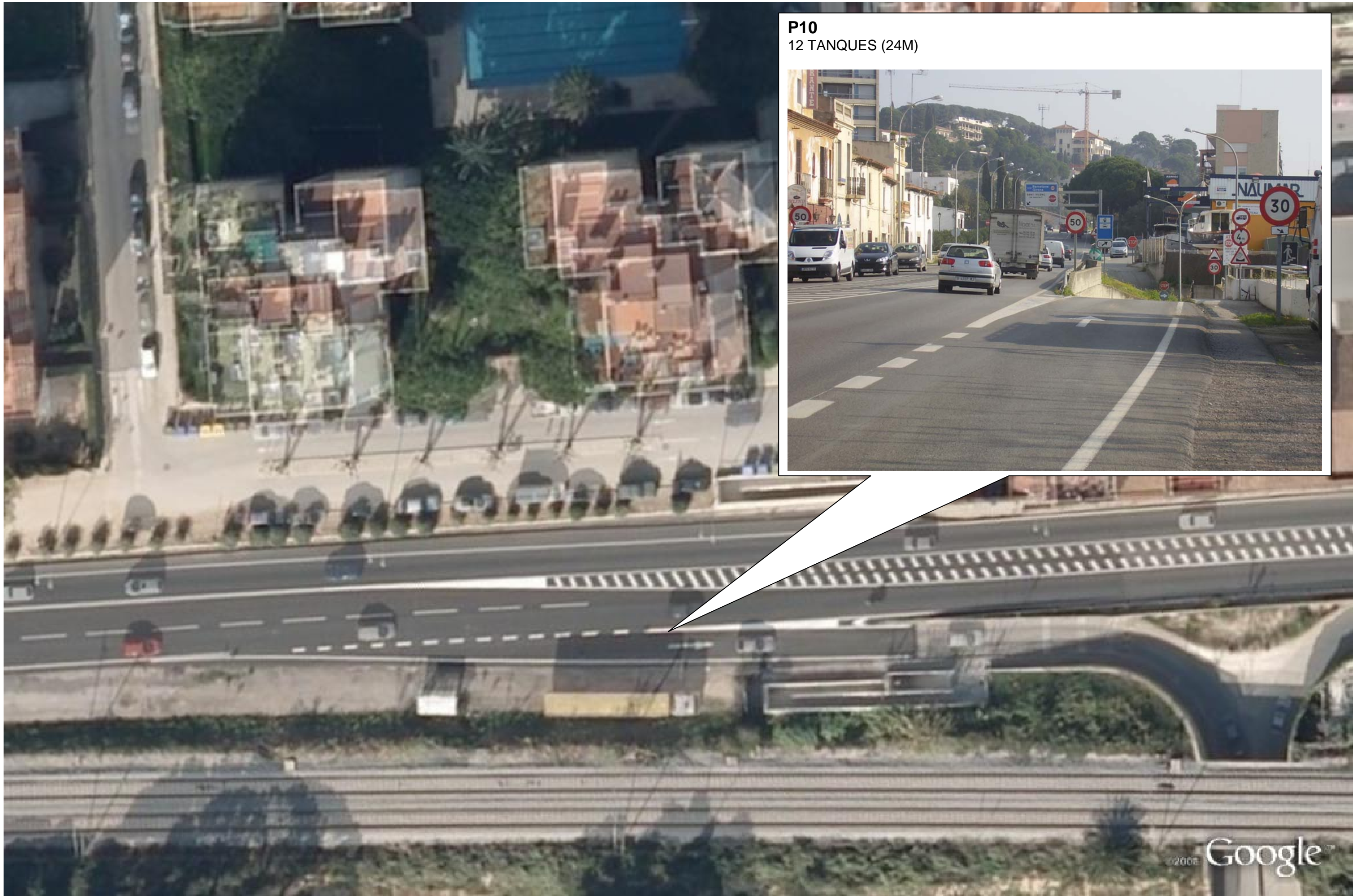


P9
6 TANQUES (6M)
1 CARTELL INDICADOR (TALLAT N-II)

A street-level photograph showing a road intersection. On the left, there is a multi-story brick building with balconies. A white street lamp stands on the sidewalk. A red and white circular sign is visible on the right side of the road. The road has a zebra crossing and a crosswalk. A white callout box with a black border is overlaid on the image, containing text and a smaller inset image of the same scene.



P10
12 TANQUES (24M)



P11
4 VOLUNTARIS + 1 AGENT PUNTUAL
23 TANQUES (45 M)





P12
4 NEWJERSEY (7M)



P13

2 VOLUNTARIS
4 TANQUES (7M)
1 CARTELL INDICADOR (TALLAT N-II)



TANCAMENT DE LA N-II AL PAS PER SANT VICENÇ DE MONTALT

MÍNIMS

Recursos humans----- 13 voluntaris

Material:

Tanques----- 95
Conus----- 30
Newjerseys----- 16
Senyalització incidències----- 50
(N-II tallada-alternativa)

Polícies Locals----- 3

Vehicles policials----- 3

Serveis municipals----- 6

Vehicles brigada----- 3

DISPONABILITAT

Material:

Tanques----- 60
Conus----- 50
Newjerseys----- 25

Polícies Locals----- 3

Vehicles policials----- 3

COMUNICACIÓ

Cartells informatius----- 150
(dies esdeveniment)

Fulletons informatius----- 3.000
(comerços)