





**P7**  
2 VOLUNTARIS  
15 TANQUES (30M)







**P8**  
2 TANQUES (4M)  
1 CARTELL INDICADOR (TALLAT N-II EXCEPTE GASOLINERA I APARTAMENTS CARCS)

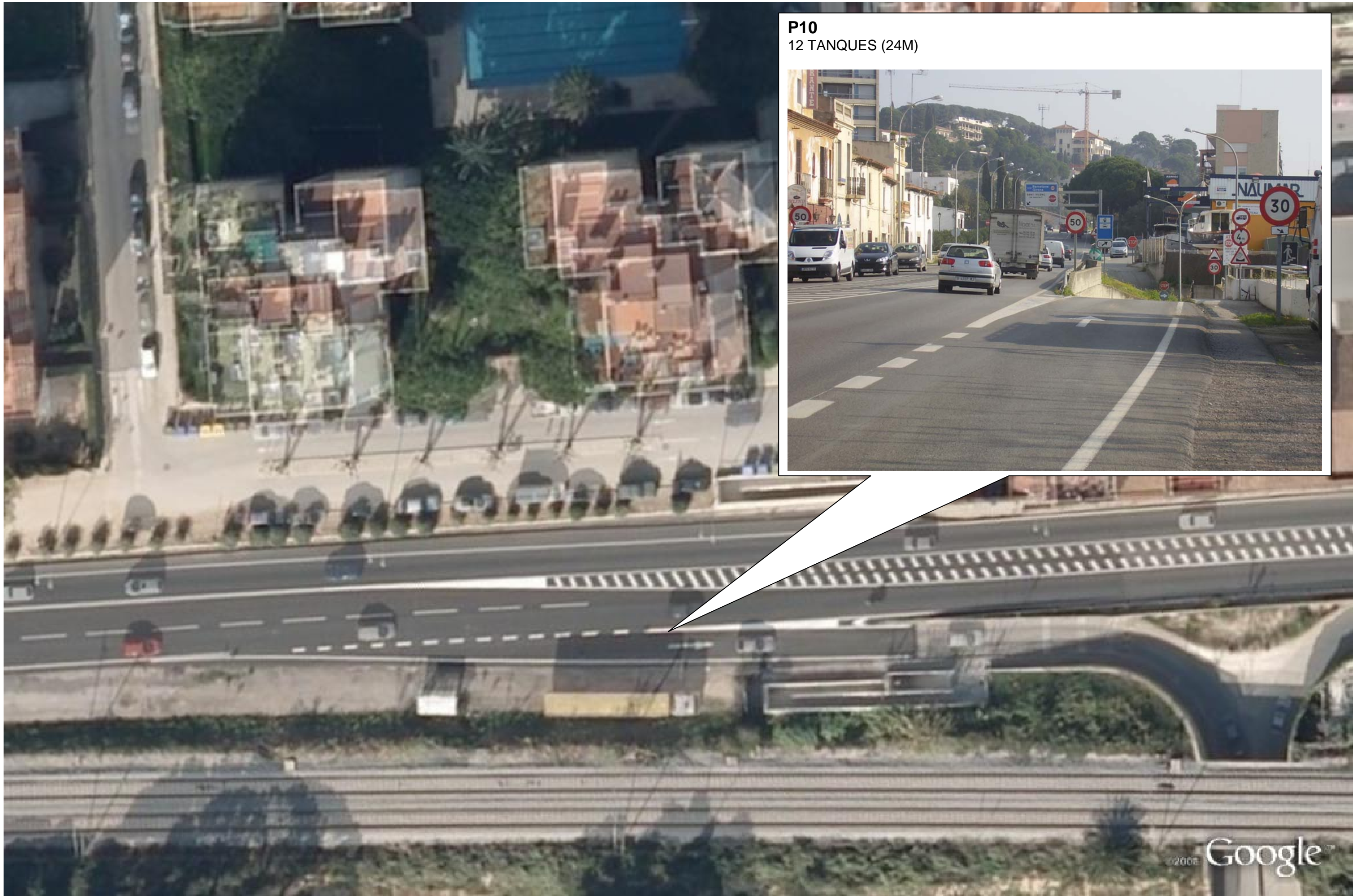




**P9**  
6 TANQUES (6M)  
1 CARTELL INDICADOR (TALLAT N-II)







**P10**  
12 TANQUES (24M)



**P11**  
4 VOLUNTARIS + 1 AGENT PUNTUAL  
23 TANQUES (45 M)







**P12**  
4 NEWJERSEY (7M)



**P13**

2 VOLUNTARIS

4 TANQUES (7M)

1 CARTELL INDICADOR (TALLAT N-II)

